

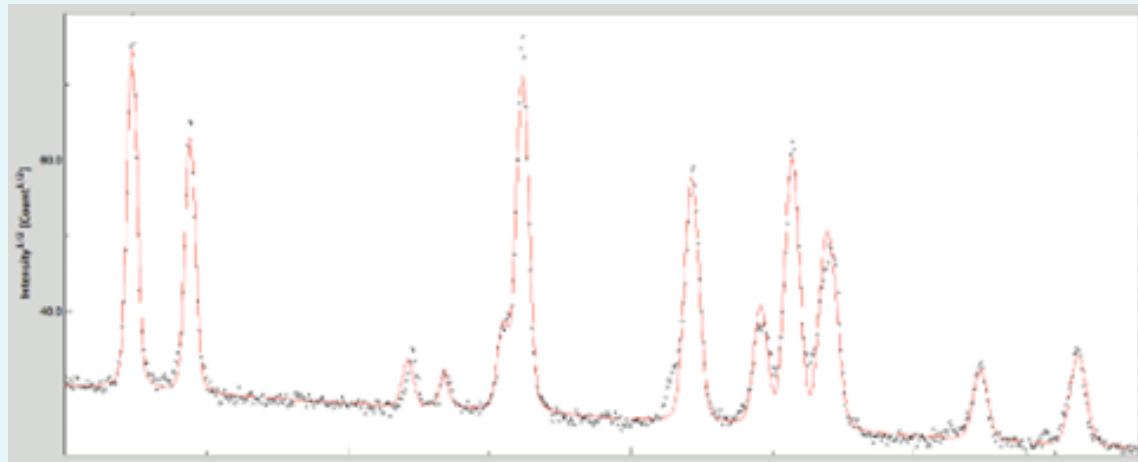


Georeef

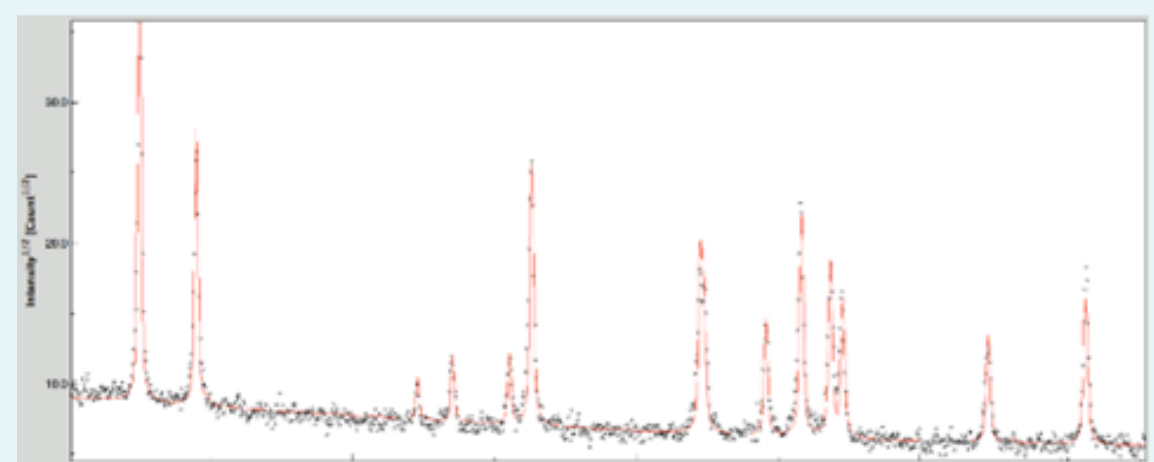
The **Geocorail** process makes it possible to create reefs of all shapes and sizes with **great structural complexity**. Its crystallographic structure is similar to that of corals, which makes our reefs **easily colonized by living organisms**.

APPLICATION

- Biomimetic solution
- No use of concrete in the design
- Composition similar to coral
- Positive carbon footprint
- Simple implementation
- Possibility of using recycled materials



Corail from Guadeloupe



Geocorail

X-ray diffraction spectra

(images Crismat-Caen)

OBJECTIVE

- Limit the impact of human activity on marine biodiversity
- Compensate for the destruction of natural habitats
- Participate in the repopulation of fauna and flora

