



Geoseabed

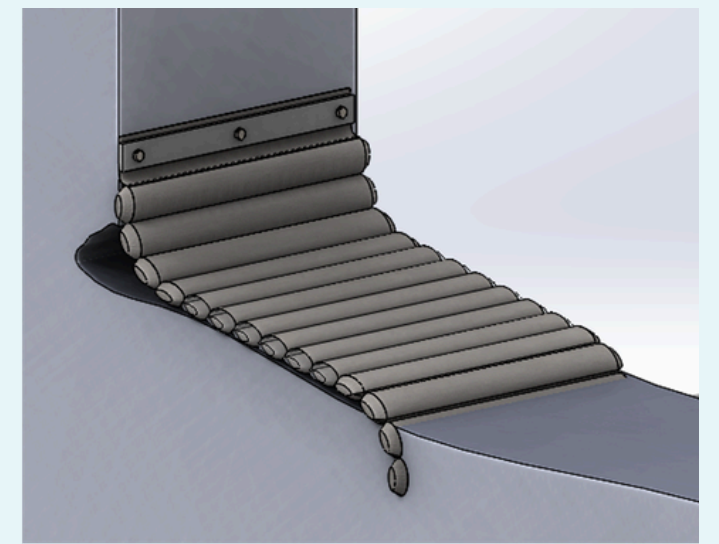
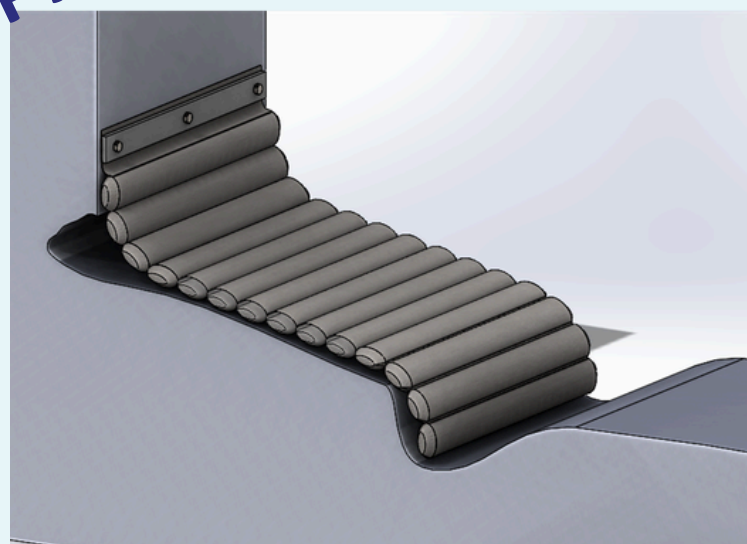
Anti-scour system for fighting against material removal at the base of structures, where water currents are intensified due to geometric constraints or docked vessels propulsion systems

APPLICATION

with customized mattresses, we definitely solve the scouring issue and resolve recurrent repairs.

GEOCORAIL coating also provides suitable habitats for biodiversity

THE PROCESS



1

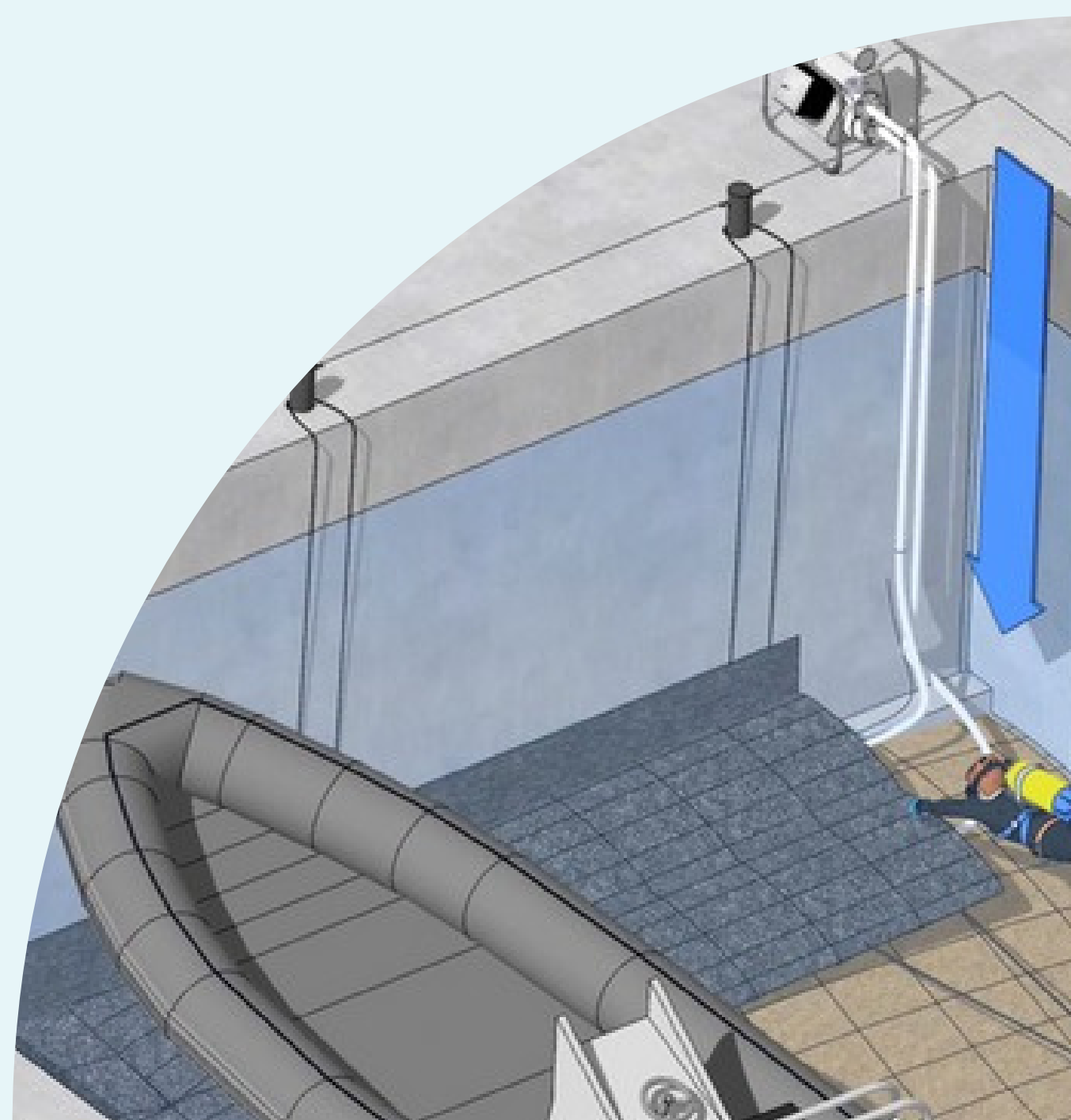
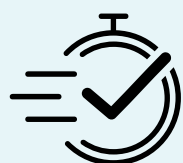
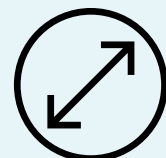
Installation of a polarizable geotextile mattress, loaded with sediments, where GEOCORAIL will build-up.

2

Once deployed, the mattress matches the shape of the seabed where scouring is likely to occur.

HIGHLIGHTS

- Easy implementation
- Sizing adapted to the size of the vessels
- Immediate effect on the structure
- Very competitive and cost-effective solution



Contact:

contact@seacure.fr

Visit us:

4 rue Gaston Castel, 13016 Marseille

More information:

www.seacure.fr