

The masonry quays have the particularity of being mainly historical port structures.

Over time and maritime aggressions, these structures can show several alterations: subsidence and degradation of the quay, generalized erosion of the joints, loosening of the crowning and/or facing stones, scouring at the foot of the wall, etc.

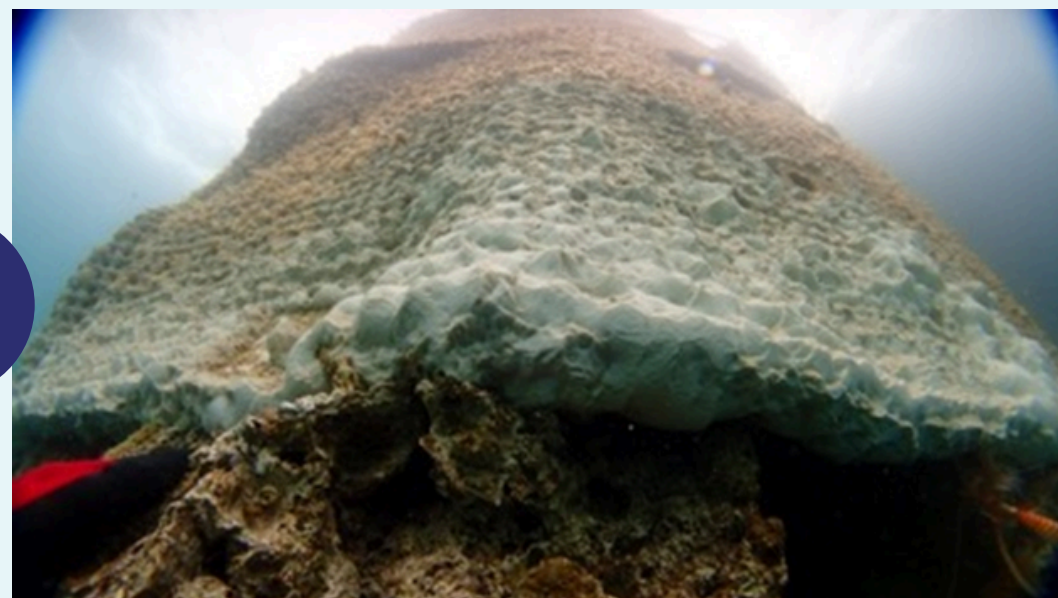
If they are not treated, these disorders can threaten the structural strength of the structure.

## HOW DOES IT WORK

In order to protect and reinforce the masonry platforms, SEACURE uses the GEOCORAIL process to create a rock covering on the structure – GeoDock. This coating acts as a kind of plaster and stops the process of deterioration of the structure.

This solution takes place in several phases:

- Fastening avalanche nets or expanded metal plates to the risk area
- Polarization of the metal structures for about 24 months using the GEOCORAIL process to obtain a rock coating of significant thickness



## STRENGTHS

- Extending the life expectancy of the structure
- Immediate effect on the structure
- Eco-friendly solution (biomimetic coating)
- Effective and long term solution